

## Eco-Friendly House Paint Inspired By The Self-Cleaning Lotus Flower

FEBRUARY 2, 2013 by [BETH BUCZYNSKI](#)



*The lotus flower springs from the dirty, muddy river bottom, yet always appears fresh and clean. Unlocking its secret grooming habits inspired a new house paint that stays clean without washing.*

The lotus flower is a delicate and strikingly beautiful plant, sacred for Hindus, Buddhists and often used as a symbol of rebirth and purity. Centuries of living in muddy lakes and ponds allowed the lotus to develop a flawless method of repelling dirt: when it rains, a combination of [microscopic bumps and hairs](#) on the lotus' waxy leaves cause water droplets to bead up. Then, the leaf's precise angle causes the balls of water to roll off due to gravity, taking the attached dirt particles with them and cleaning the leaf without expending energy. Cleaning without energy—now there's an idea we can all appreciate!

This phenomena has been named the '[Lotus Effect](#)' and, not surprisingly, it has inspired an entire industry of self-cleaning textiles, windows, [sprays](#) and other products. One of the more interesting is an eco-friendly house paint called [Lotusan](#). Developed by a German company called ISPO, this exterior paint employs a microstructure modeled after the hydrophobic leaves of the lotus plant to minimize the contact area for water and dirt.



It's recommended that you clean your home's exterior once a year. Over time, most home exteriors become faded or flecked with dirt. On weather exposed sides in particular, microorganisms find an ideal environment for colonization in moisture and nutrients from dirt deposits. Washing a house usually requires a pressure washer. Adventurous home owners may choose to save money by renting one, while most of us hire an expert to do it. Either method will cost you hundreds of dollars and it's likely that a harsh detergent or even bleach will be employed, which is bad news for your flower beds and the local water supply.

On the other hand, if you're due for a new coat of [paint](#) anyway, covering your house with Lotusan could help you save money and reduce environmental impact. Although it looks and feels completely smooth, Lotusan imparts microscopic bumps and ridges that minimize the contact area for water and dirt, making it naturally resistant to the growth of mold, mildew, and algae.

According to StoCoat, Lotusan is LEED compliant, and ideal for new construction and recoat projects over concrete, stucco, EIFS, and fiber cement board substrates. It's also available in virtually any color, including custom color matching.

*Image: [Jeda Villa Bali](#)*

<https://phys.org/news/2006-02-scientists-role-nano-hairs-self-cleaning-lotus.html>

## Scientists confirm role of nano-hairs in self-cleaning lotus leaf

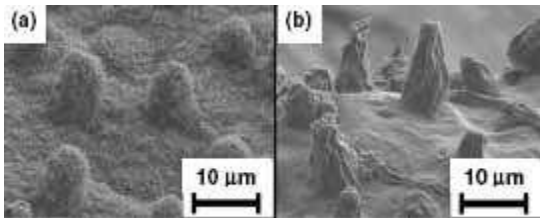
February 17, 2006 [feature](#)



Due in part to the micro- and nano-scale structures of the lotus leaf and the air trapped in between, only 2-3% of a raindrop actually contacts the leaf surface, and then rolls off. Image source: Wolf Friedmann.

Today, thousands of buildings boast self-cleaning paint and self-cleaning roofs; self-cleaning textiles, glass windows and sprays have already sprung onto the market. German botanist Wilhelm Barthlott has even owned a patent, copyright and trademark on this self-cleaning phenomenon since 1997. But despite the development of these practical applications, scientists still have a lot to learn about the specific mechanisms behind self-cleaning – or the so-called “Lotus Effect.”

The lotus – a type of water lily native to Asia – has had its praises sung for thousands of years. In religious symbolism, Buddha often sits on a lotus leaf. Hindus view the lotus blossom as a symbol of divine beauty, associating the unfolding of the petals with the expansion of the soul. More recently, botany and nanotechnology have united to explore not only the beauty and cleanliness of the leaf, but also its lack of contamination and bacteria, despite its dwelling in dirty ponds.



These images from a scanning electron microscope compare (a) an untreated lotus leaf, with micro- and nano-scale structures, with (b) an annealed lotus leaf, where the nano-hairs have been melted away. The annealed leaf restricts the ...[more](#)

In recent years, scientists have developed theoretical models of the underlying mechanisms of the lotus leaf's self-cleaning properties. Basically, the lotus leaf has two levels of structure affecting this behavior – micro-scale bumps and nano-scale hair-like structures – coupled with the leaf's waxy chemical composition. However, research has not included a systematic, experimental investigation isolating structural and compositional effects, until now.

“What are the mechanisms giving rise to the lotus effect?” asked scientists from Michigan (Y. T. Cheng et al) who published a paper in *Nanotechnology* on February 10. “We are able to separate the effects of nanometer features from micrometer roughness... [which] may help design self-cleaning surfaces and improve our understanding of wetting mechanisms.”

The self-cleaning property of the lotus leaf – and applications derived from nature's model – requires the surface to have roughness on two scales. When a raindrop falls on a lotus leaf, it forms a high contact angle (greater than 90 degrees), which means that it beads up rather than spreads out, as a liquid with a low contact angle (less than 90 degrees) would. A lotus leaf can have a contact angle close to 170 degrees, making it extremely hydrophobic. (For reference, human skin is slightly hydrophobic with about a 90-degree contact angle.) In fact, as little as 2-3% of the raindrop actually contacts the surface of a lotus leaf due to the waxy composition of the leaf, and to the air trapped between the raindrop and the leaf's micro- and nano-structures.

With such a small amount of contact between water and leaf, the raindrop rolls – rather than slides – down the leaf with little friction. The drop collects dirt and bacteria on its way, and in effect cleans itself.

The Michigan team compared how the self-cleaning property would perform on a lotus leaf with both micro- and nano-structures or with only micro-structures to a lotus leaf. They also compared water drops on a piece of waxed cast smooth on glass. The scientists annealed (a process of heating and slow cooling) a sample of the leaves to melt the nano-scale hair structure while retaining the wax composition without chemical change. The team measured a significantly lower contact angle for the leaf with only micro-structures (126 degrees) and even lower for the smooth wax (74 degrees), compared with the contact angle of the two-structured leaf (142 degrees).

“The presence of the nano-scale hair-like structure is responsible for the additional increase of 16 degrees in contact angle,” the scientists report. “The two-level roughness, in particular, the nano-scale hairs, amplifies the apparent contact angle and is responsible for the rolling behavior of the drops.”

This study marks the first time that the effect of the nano-hairs has been isolated from the microstructure and chemical composition of the leaf. The results verify the importance of the nano-structure on the lotus leaf's self-cleaning ability – an essential understanding for inventors designing self-cleaning products in the future.

Reference: Cheng, Y T, Rodak, D E, Wong, C A and Hayden C A. “Effects of micro- and nano-structures on the self-cleaning behaviour of lotus leaves.” *Nanotechnology* 17 (2006) 1359-1362.

By Lisa Zyga, Copyright 2006 PhysOrg.com